

WORK SHEET- 1

DIFFUSION AND OSMOSIS

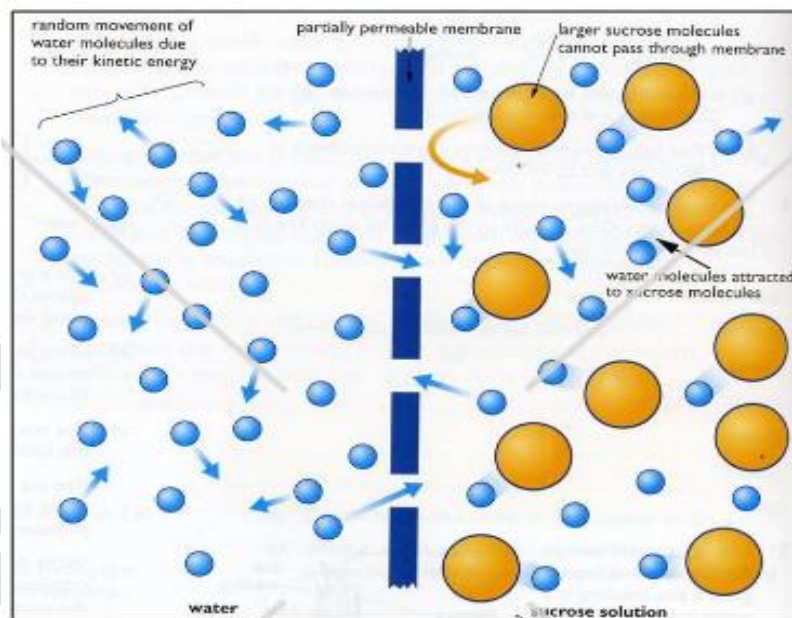
1. Use the key points to fill in the blanks:

(Equilibrium, permeable, passive, low, high, energy, randomly)

Diffusion is a _____ process, meaning it does not require _____.

Molecules move around _____ but their net movement will be from _____ to _____ Concentration until an _____ is reached. This movement occurs across a partially _____ membrane.

2. (i) Name the process occurring in the diagram given below.

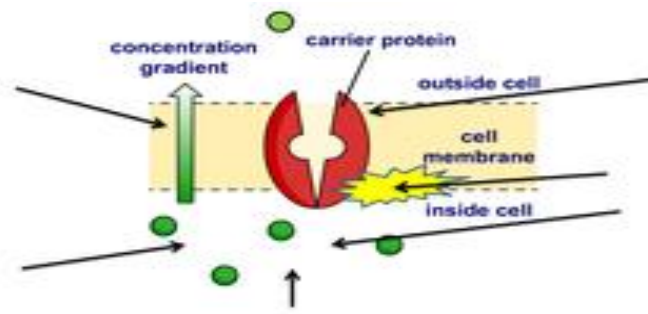


(ii) On which side of the diagram (right or left) is there a higher concentration of water molecules.

(iii) What does the term partially permeable mean?

(iv) Why the solute molecules cannot pass through the partially permeable membrane?

4. Identify the process taking place in the diagram given below and define the process.



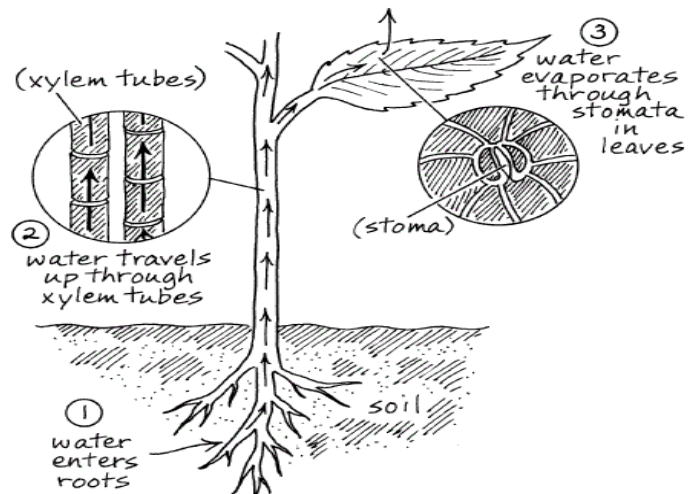
5. Name the two types of tissues and its function.

6. Differentiate between sap and ascent of sap.

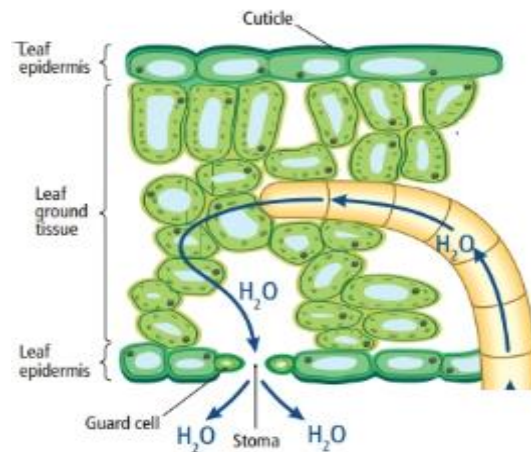
7. Write the factors responsible for ascent of sap.

WORK SHEET - 2
TRANSPIRATION AND VASCULAR TISSUES

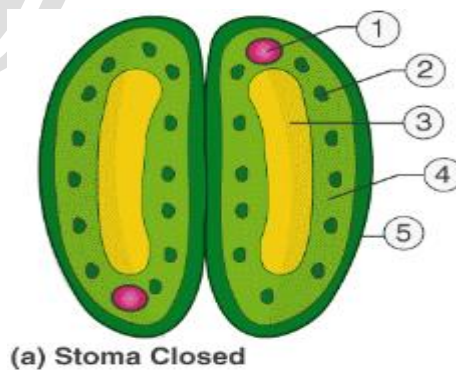
1. The diagram given below represents a process taking place in plant. Identify the process taking place in number 3 and define it.



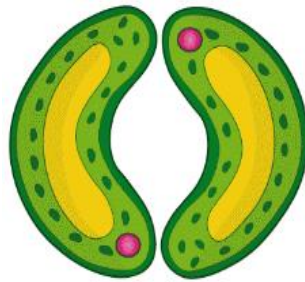
2. Observe the diagram given below and write which kind of transpiration is taking place and mention the structure involved in this process.



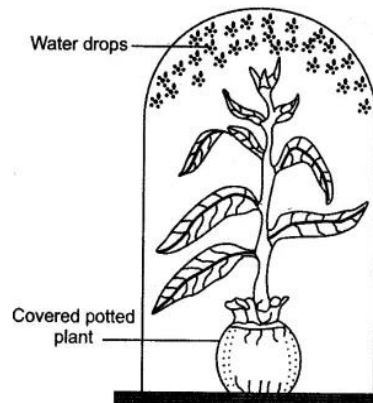
- 3.(i) Label the diagram given below 1,2,3,4,5.



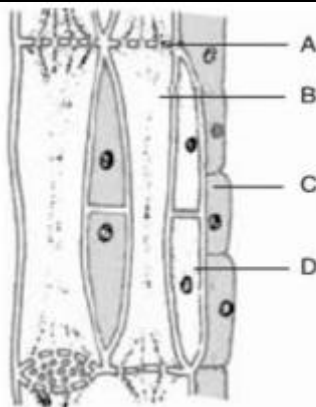
(ii) Label stoma and guard cell in the diagram given below.



4. What does the figure given below depict ? Why water droplets are seen on the top surface of the bell jar?



5. Identify the tissue given below and label A, B, C & D:



6. Name the three types of transpiration.

7. What is guttation ? Name the structure through which guttation occurs.

8. What is meant by Transpirational pull?

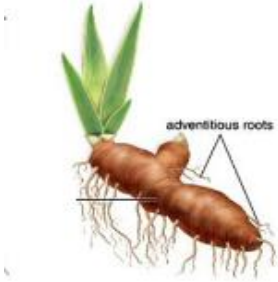
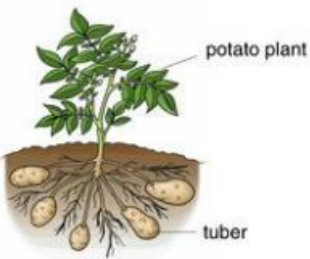



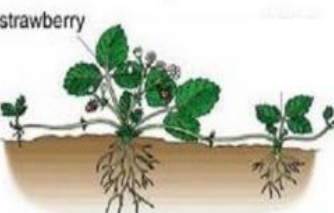
9. What is meant by translocation ?

10. Differentiate between micro and macronutrients.

11. Write any three micro and macro nutrients and write its function in plants.

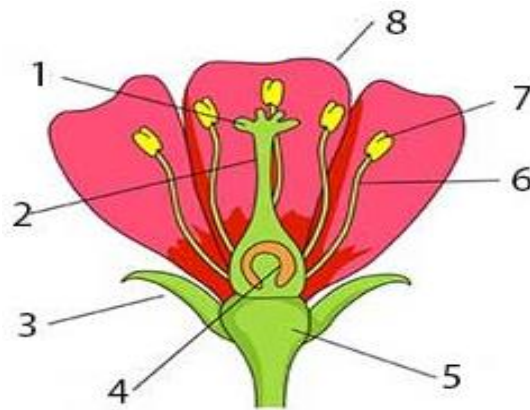
WORK SHEET- 3
ASEXUAL REPRODUCTION IN PLANTS

1. Read and analyse the pictures. Write the answer in the space provided.

Asexual reproduction	
Plant	Description :Method of reproduction
<p>1.Ginger plant</p>  <p style="text-align: center;">adventitious roots</p>	
<p>2.Potato</p>  <p style="text-align: center;">potato plant</p> <p style="text-align: center;">tuber</p>	
<p>4.Fern plant</p> 	
<p>5.Onion</p>  <p style="text-align: center;">onion bulb</p>	
<p>6.Bryophyllum</p> 	
<p>7.Straw berry plant</p>  <p style="text-align: center;">strawberry</p>	

WORK SHEET: 4
SEXUAL REPRODUCTION IN PLANTS

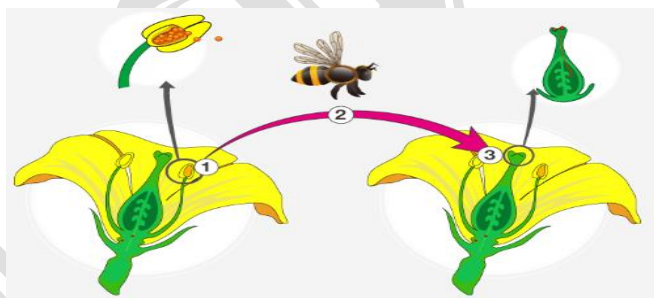
1. Label 1 to 8 in the diagram given below.



2. Complete the table below with the functions of the main parts of a flower.

Flower part	Function
1.Petal	
2.Anther	
3.Stigma	
4.Ovary	
5.Sepal	

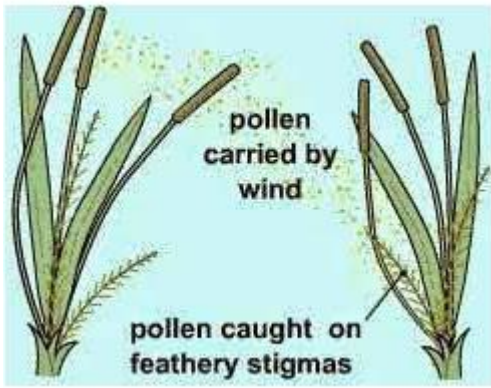
3. Identify the diagram and answer the following questions.



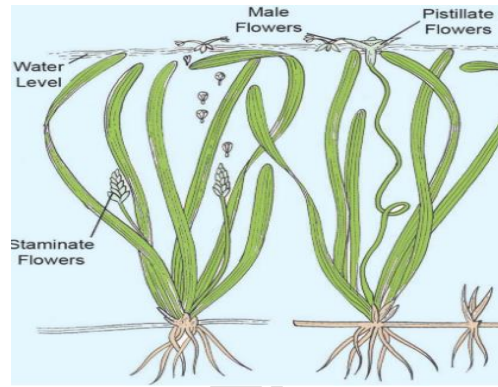
i) Identify the process taking place in the diagram given below.

ii) Name the organism in 2 and how it is helpful to plants.

4. i) Write down the type of pollination occurring in the image given below in (A) and (B).



(A)



(B)

ii) Why more number of pollen grains are produced in (A)?

iii) Name the plant species in (B).

5. Write the adaptations of wind pollinated flower.

WORK SHEET - 7

FOREST ECOSYSTEM

1. i) Identify the type of forest ecosystem and name it.



ii) Write the fauna and flora of the ecosystem given above.

2. The picture given below represents the temperate deciduous forest.



i) Where these temperate forests are found?

ii) Write the main characteristics of the temperate forest.

iii) Write the four season of this kind of forest.

3. i) Identify and write the type of forest found in the picture given below.



ii) Name some of the plant species found in this forest.

iii) The taiga has _____ winters and _____ summers.

iv) Some parts of the conifers have a permanently frozen sub layer of soil called _____.

v) Write the fauna of taiga forest.

4. Write the features of tropical rain forest.

5. What are epiphytes?

6. What is meant by leaching?

7. Differentiate between warm and cold blooded animals.
