

Worksheet - 1

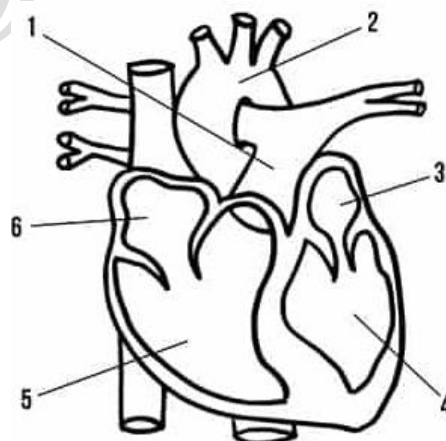
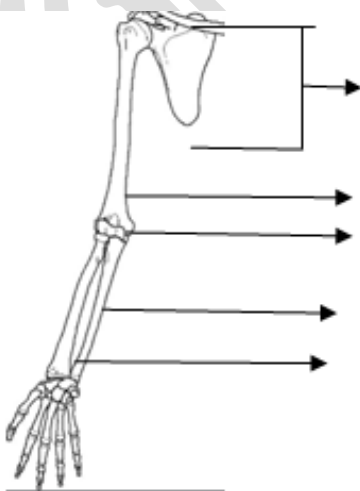
I. GIVE REASONS FOR THE FOLLOWING STATEMENT:

- 1) Veins have valves, but arteries do not.
- 2) We do not have voluntary muscles in our heart.
- 3) Flowers are reproductive parts of the plant.
- 4) Coconuts are light with water resistant covering.
- 5) Liquids and gases flow, virus solids do not.

II. ANSWER THE FOLLOWING QUESTIONS IN BRIEF:

- 1) Differentiate between miscible and immiscible liquids by using a suitable example.
- 2) How does vegetative propagation occur in Bryophyllum?
- 3) Define Pollination. What is cross pollination?
- 4) What are the functions of the skeleton?
- 5) Give two differences between arteries and veins.

III. PICTURE BASED QUESTION: -



Worksheet - 2

I. GIVE REASONS FOR THE FOLLOWING STATEMENT:

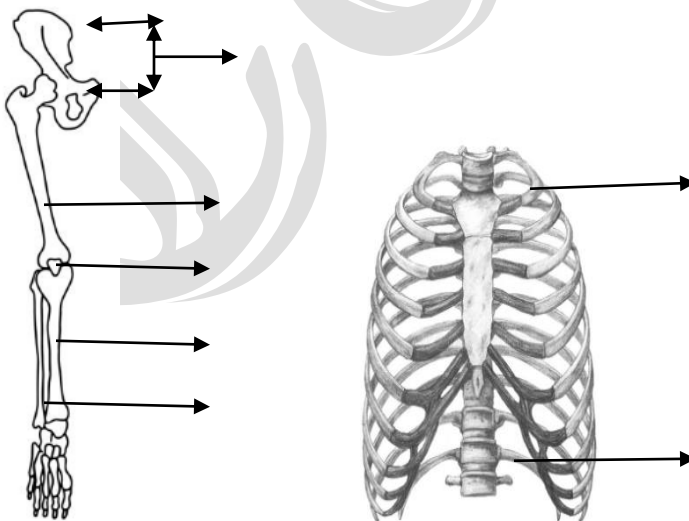
- 1) Heart produces the characteristics lubb -dubb sound.
- 2) The last two ribs of the rib cage are called floating ribs.
- 3) The food pyramid shaped like a triangle.
- 4) A hibiscus may or may not need a pollinating agent for reproduction.
- 5) For distillation that should be a large difference in the boiling points of the liquid components.

II. ANSWER THE FOLLOWING QUESTIONS IN BRIEF:

- 1) What are the functions of blood?
- 2) How are ligaments different from tendons?
- 3) What is roughage? How is it important for our body?
- 4) What is the female reproductive organ of a plant called? What are its different parts?
- 5) What do you mean by sedimentation and decantation?

PICTURE BASED QUESTION: -

Identify the bones and label the parts.



Worksheet - 3

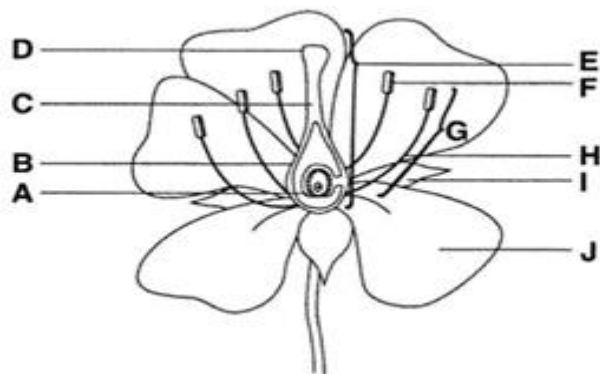
I. ANSWER THE FOLLOWING QUESTIONS IN DETAIL:

1. Explain the movement of blood in the body with the help of a diagram.
2. Describe the structure of a rib cage.
3. List some measures we should take to make our diet healthy.
4. Explain different parts of a flower with the help of a diagram.
5. What is dispersal of seeds? What are the different agents of dispersal?

II. PICTURE BASED QUESTION: -

Read the facts about seed dispersal below and fill in the missing words. Use the word bank given in brackets to help you.

[Pods plants dispersed better wind water air shade float
droppings explosions fur.]



- a. A seed can grow in to a new-----
- b. Plants need ----- light, water and room to grow.
- c. Seeds are ----- in many different ways.
- d. Some seeds can catch the ----- and float away from their parent.
- e. Seeds can also travel by -----.
- f. Seeds can be dispersed by sticking to an animal's -----

- g. Some animals eat the fruits that have fallen from the trees and deposit the seeds in their -

- h. Some seeds are dispersed by -----.
- i. Seed ----- explode and finding the seeds away.
- j. Seeds and fruits that are dispersed by water can -----
- k. A seed will grow ----- if it starts to grow away from the parent plant.

III. MATCH THE FOLLOWING:

- | | | |
|----------------------|---|--------------------------------------|
| 1) Marasmus | — | Osteoporosis, |
| 2) Lack of vitamin A | — | Non-communicable diseases. |
| 3) Lack of vitamin D | — | Dry and wrinkled skin. |
| 4) Allergies | — | Swelling in legs and stomach. |
| 5) Kwashiorkor | — | Night blindness. |
| 6) Vitamin A | — | Cannot see in dim light. |
| 7) Vitamin B | — | Affects the nervous system. |
| 8) Vitamin C | — | Gums bleed. |
| 9) Vitamin D | — | Thyroid gland in the neck swells up. |
| 10) Iodine | — | Bones become weak. |

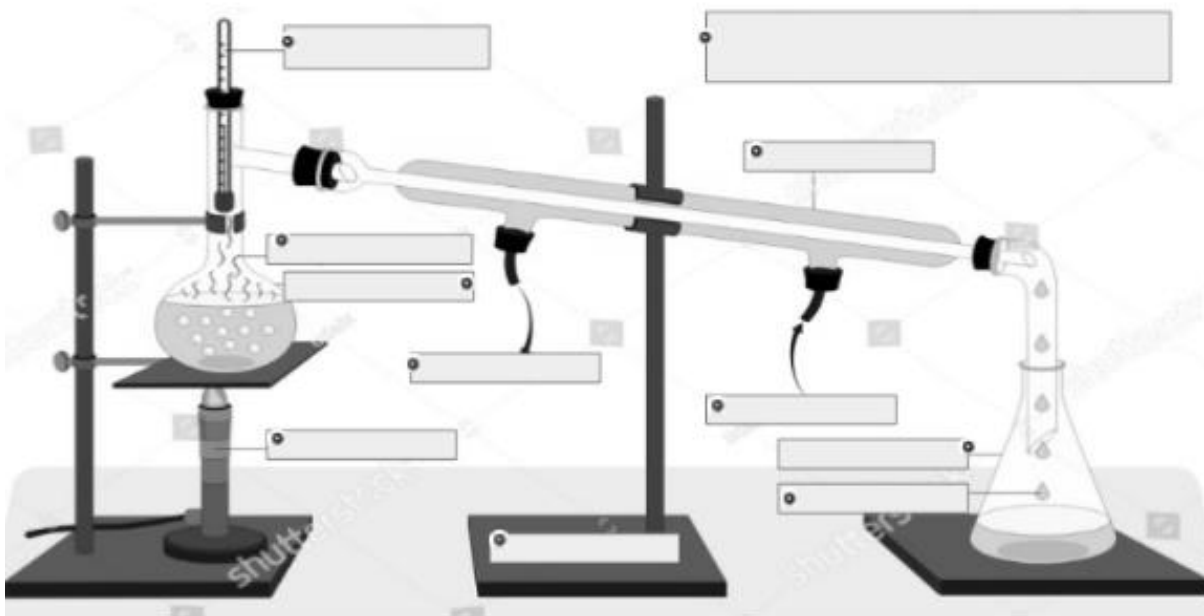
Worksheet - 4

I. ANSWER THE FOLLOWING QUESTIONS IN DETAIL:

1. Differentiate between skeletal and smooth muscles.
2. Differentiate between pulmonary circulation and systemic circulation.
3. Distinguish between lifestyle diseases and deficiency diseases.
4. Differentiate between bisexual and monosexual flowers.
5. Distinguish between evaporation and condensation.

II. PICTURE BASED QUESTION: -

Name and label the parts:



III. GIVE TWO EXAMPLES OF THE FOLLOWING:

- | | | |
|----------------------------------|-------|-------|
| 1) Flowers pollinated by insects | _____ | _____ |
| 2) Flowers pollinated by bats | _____ | _____ |
| 3) Seeds dispersed by water | _____ | _____ |
| 4) Seeds dispersed by explosion | _____ | _____ |
| 5) Roughage | _____ | _____ |
| 6) Vitamins and minerals | _____ | _____ |

Worksheet - 5

I. ANSWER THE FOLLOWING QUESTIONS IN A WORD:

1. Which blood vessel has a thicker wall?
2. The left ventricle pumps the blood into which artery?
3. What is the function of the backbone?
4. What are joints?
5. Which type of food contains useful bacteria?
6. Diabetes is an example of which type of disease?
7. Name the male reproductive part of a plant?
8. Which type of pollination occurs in maize?
9. How do ferns reproduce?
10. Which type of solids have geometrically arranged molecules?

II. DEFINE THE FOLLOWING: -

1. Pulse rate .
2. Valves.
3. Double circulation.
4. Germination.
5. Dispersal.
6. Fertilization.
7. Vegetative propagation.

III. NAME THE FOLLOWING :-

- 1) Joints in our shoulder and hip. _____
- 2) The framework of bones in our body . _____
- 3) The smallest bone in our body is found here. _____
- 4) The female reproductive organ of the plant . _____
- 5) Development of a seed into seedling . _____